



The Noojee & District Historical Society presents the construction of the ‘Platform Goods & Storage Shed’ at the Noojee Heritage Centre



The Noojee Heritage Centre and J550 locomotive



Introduction

The Noojee Heritage Centre is a replica of the original Noojee railway station and proudly displays a 1950s J class locomotive along the platform.

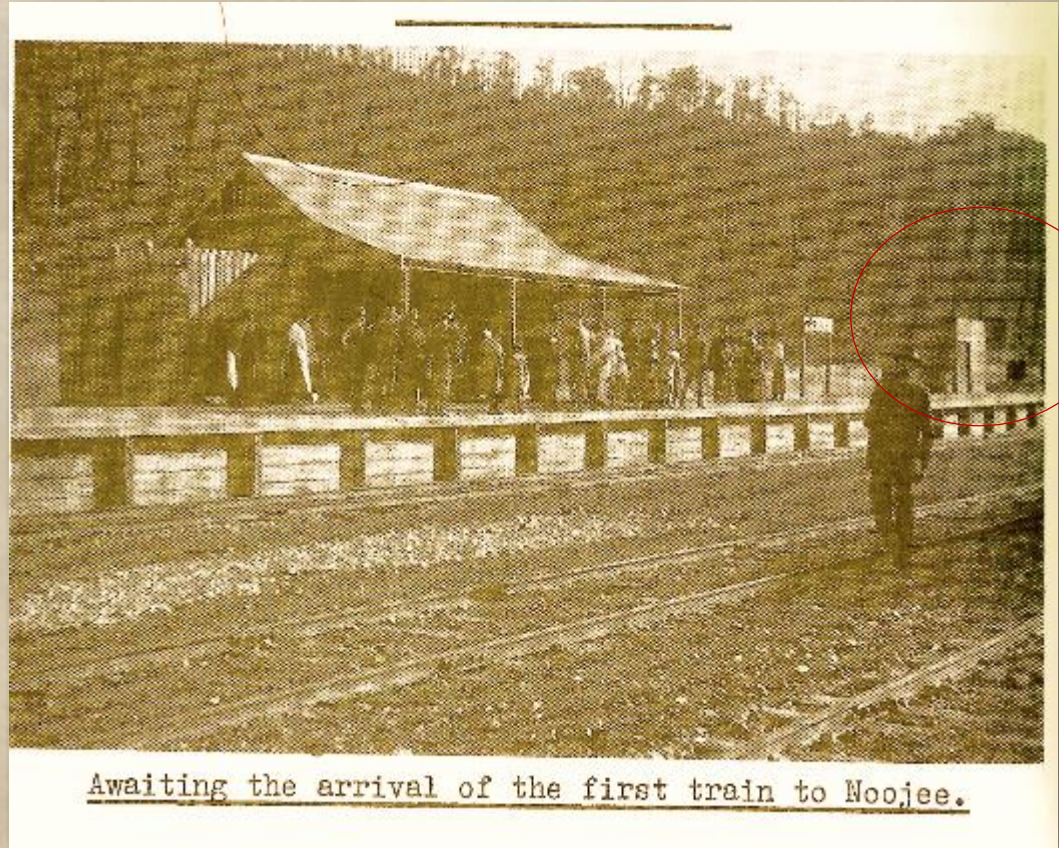
The Platform Goods and Storage Shed will contribute significant economic outcomes to the region with increased visitor participation and a visual experience plus enabling additional volunteering and fundraising opportunities.



Heritage Centre Stage 2 – 2016

Stage 2 of our project was to replace a replica of the original Platform Goods and Storage Shed, on the original site, on the Noojee Railway Station platform.

A goods shed is a railway building designed shed and was used as cargo was loaded and unloaded from trains.

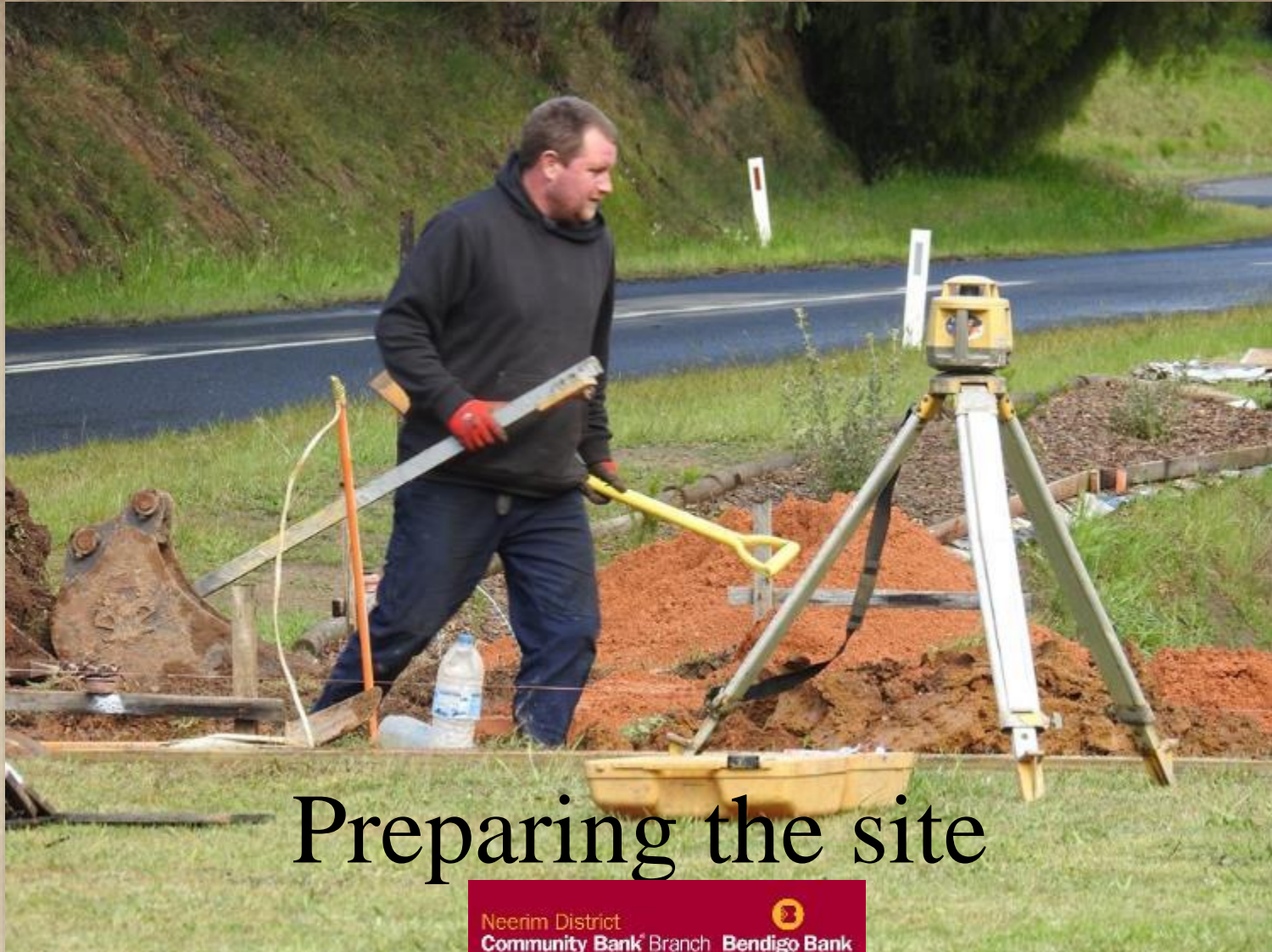




The original site in 2016

Neerim District
Community Bank Branch Bendigo Bank





Preparing the site

Neerim District
Community Bank Branch Bendigo Bank







Neerim District
Community Bank Branch Bendigo Bank





Neerim District
Community Bank Branch Bendigo Bank





Neerim District
Community Bank Branch Bendigo Bank





This project provides the opportunity for the Noojee & District Historical Society to actively promote itself on our own site, through better support local initiatives such as the Noojee Progress Association's monthly Noojee Station Market, that is held on the Heritage Centre site.





The frames are erected

Neerim District
Community Bank Branch Bendigo Bank





Neerim District
Community Bank Branch Bendigo Bank







Wall lining and roof assembly

Neerim District
Community Bank Branch Bendigo Bank



For most people, history starts with simply learning about their family or their community and the new shed has significant ties back to the past and the Noojee & District Historical Society are making a concerted effort to preserve our history as it is a vital link to our cultural, educational, visual and inspirational heritage.





Neerim District
Community Bank Branch Bendigo Bank





The outside assembly begins

Neerim District
Community Bank Branch Bendigo Bank





Painting the timber structure

Neerim District
Community Bank Branch Bendigo Bank







Rehabilitation of grounds

Neerim District
Community Bank Branch Bendigo Bank



Preparation for landscaping

Neerim District
Community Bank Branch Bendigo Bank



Will Langoor, President of the Noojee & District Historical Society said, “The Society is here to establish a unique, informative and interesting avenue into history, culture and industry within the district. To also research and promote our local history, inspiring broad community involvement.”

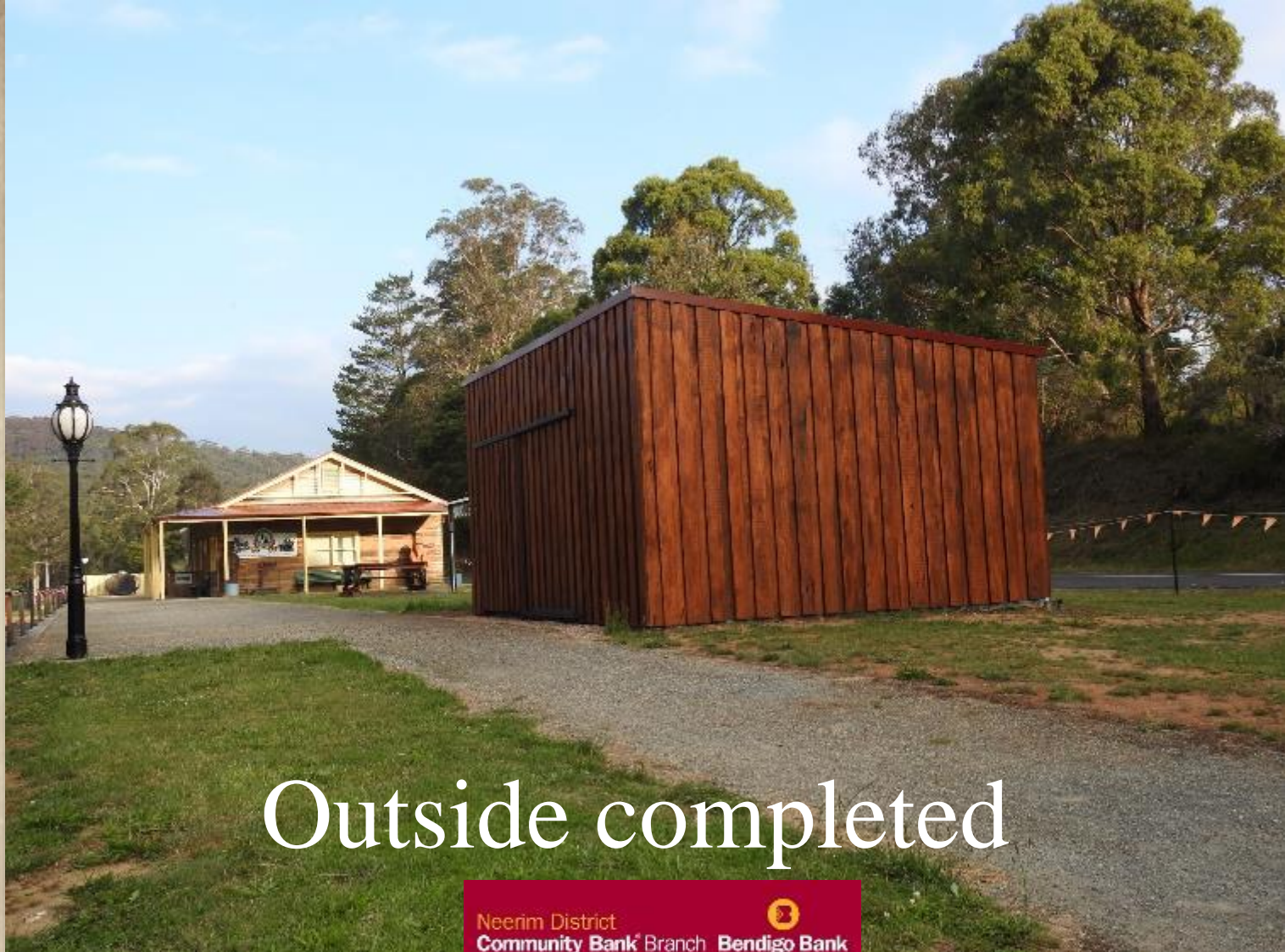




Sliding door secured

Neerim District
Community Bank Branch Bendigo Bank





Outside completed

Neerim District
Community Bank Branch Bendigo Bank





Neerim District
Community Bank Branch Bendigo Bank



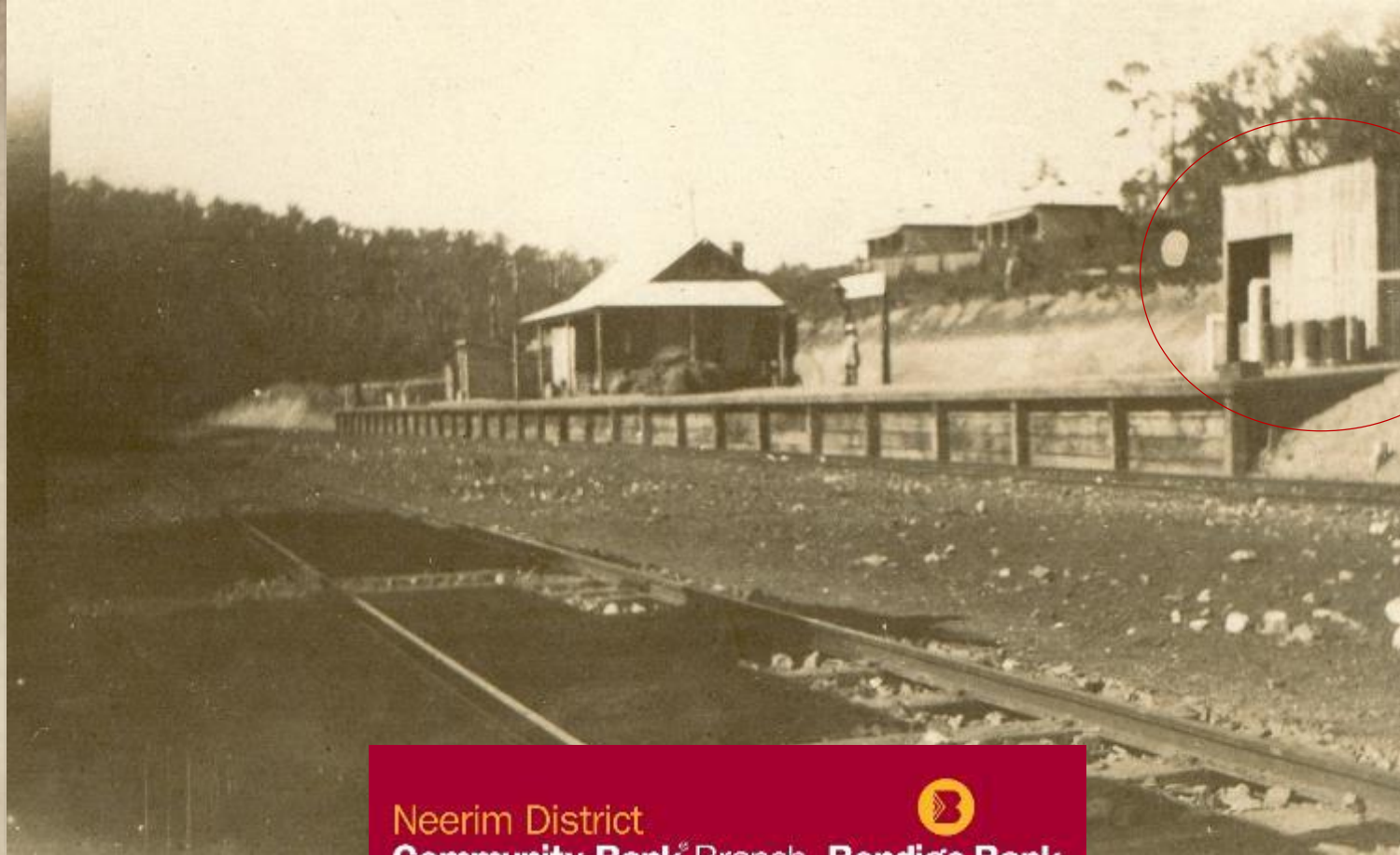


Neerim District
Community Bank Branch Bendigo Bank









The original Platform Goods and Storage Shed on the original site at the Noojee Railway Station circa 1920

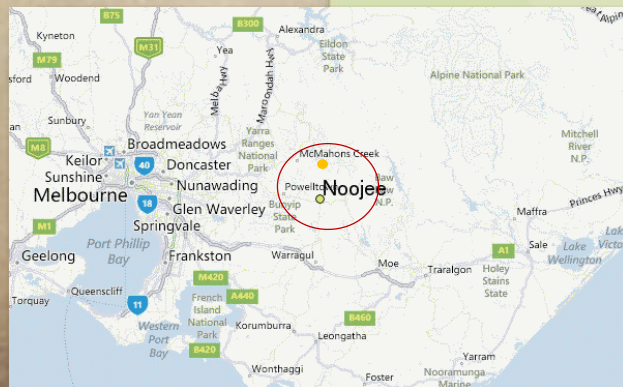


“The reconstruction of the ‘Platform Storage Shed’, thanks to the Neerim District Bendigo Bank, is just another step in building our dream of a Noojee Railway Precinct filled with treasures of the past for all to enjoy.” Will Langoor continued.



Where are we?

The Noojee Heritage Centre is just past the Noojee Hotel heading towards Mt Baw Baw



Contact Us

Talk to one of the society members present today or contact us via:

- Web: www.noojeehistoric.org.au
- Email info@noojeehistoric.org.au
- Facebook: www.facebook.com/noojeeheritagecentre
- Telephone: Will Langoor on (03) 5628 9502

